

# ILMXT-G

## Interior Green Beam Self-Leveling Laser Cross Level



The Job Demands Precision. You Demand Performance. The New ILMXT-G Delivers.

Angled Window for Extended Vertical Plumb Line

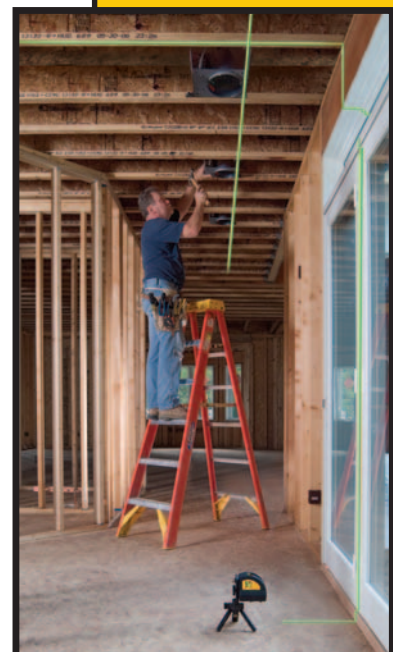
Extra-Wide Horizontal Level Beam



\* Patent Pending

Robust Over-Molded Housing for Durability (IP55)

\* 4 times brighter than red laser diodes.



### Technical Specifications

Laser Diodes:	525nm - 540nm
Laser Class:	2M
Accuracy:	±3/32-in @ 30-ft (±2.5mm@9m)
Range:	Up to 100-ft (30m)
Line Length:	100-ft @ 32-ft (30m @ 10m)
Fan Angle:	110°
Compensator Type:	Gimbal (Ball bearing hung compensator magnetically dampened)
Self-Leveling Range:	±5°
Self-Leveling Speed:	<3 seconds
Out-of-Level Sensor:	Yes
Feature:	"Manual Mode Feature" allows tilting for extreme angles
Weight (with mount):	1.8 lbs. (0.9kg)
Wall/ Tripod mount:	1/4-20 thread
Operating Temperature:	32°F to 104°F (0°C to 40°C)
Power:	3 "AA" batteries 1.5Vdc (Alkaline, Non-Rechargeable Lithium, Ni-Mh)
Estimated Battery Life:	10-12 Intermittent Hrs using Ni-Mh batteries
Warranty:	One-Year

### ILMXT-G Standard Package

Includes Rechargeable Batteries with Charger, Magnetic Mini Laser Tripod, Strap, Carrying Case, and User's Manual

Cat.# **58-ILM-XTG**

UPC: 644425583115



# Ver. 2

## CST/berger™

Watseka, IL

www.cstsurvey.com

800-435-1859 • 815-432-9200